
To: Outback Max Users
From: Global Customer Care

Subject: MaxInstaller v1.4.24 Software Update

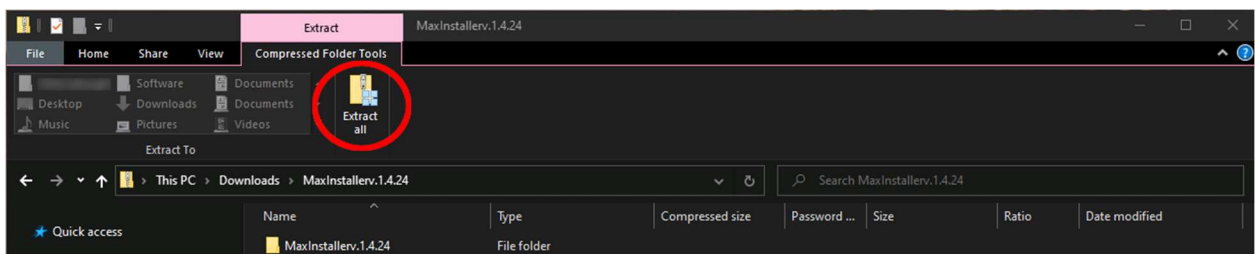
Products Affected: Outback Max

Scope: This document provides software update installation instructions using the Outback MaxInstaller

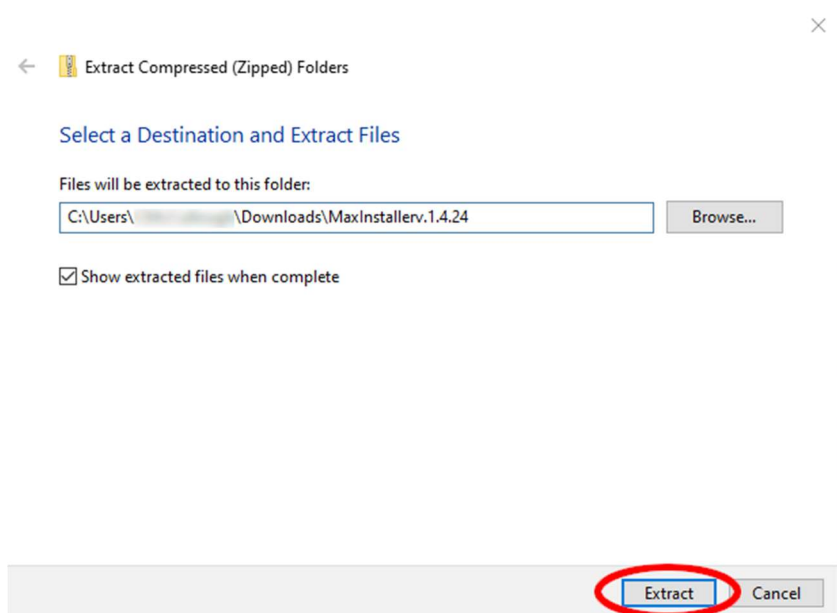
Note: Ensure the ECU is updated *before* updating the terminal

Installation Instructions

- 1) Open a web browser and go to outbackguidance.zendesk.com
- 2) Navigate to **Software > Max** and click on **MaxInstallerv.1.4.24** to download the software
- 3) Click on the downloaded **MaxInstallerv.1.4.24.zip** when complete and the file will open
- 4) Select **Extract all** at the top of the screen

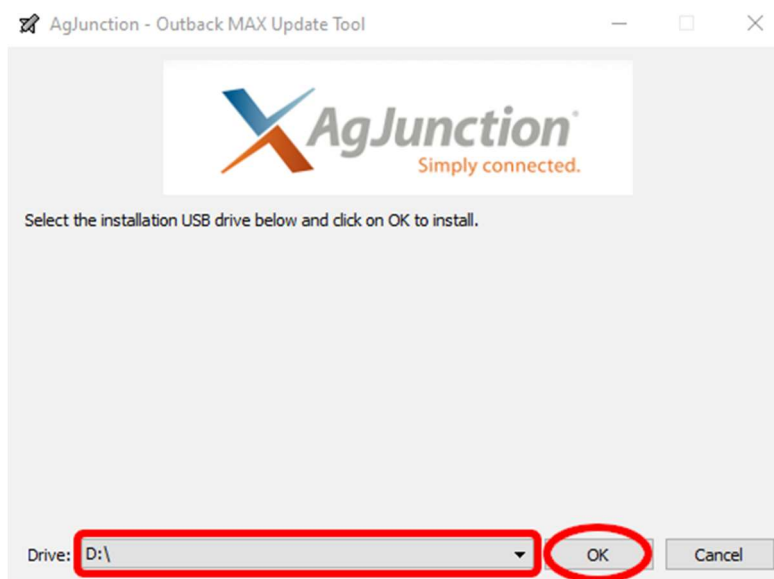


- 5) Note the folder to which the files will be extracted and click **Extract**

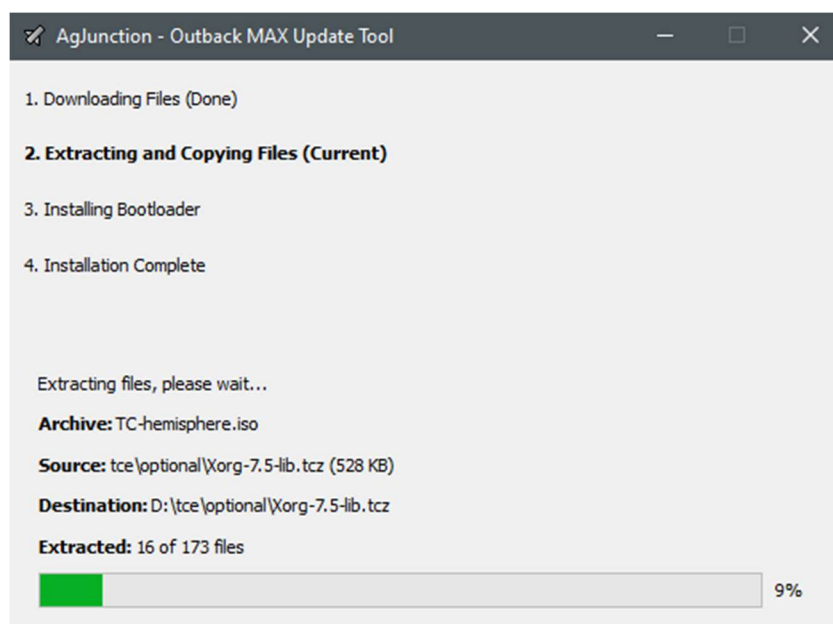


- 6) Insert a USB drive into your computer and double click the **OutbackMaxInstaller-v1.4.24.1.32174** application and click **Yes** on the User Account Control notice

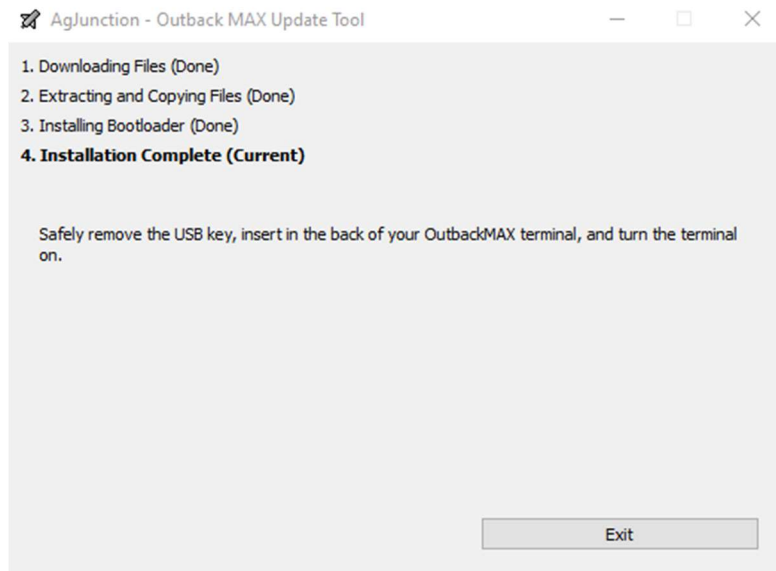
- 7) Use the drop-down menu to select the letter assigned to your USB drive and click **Ok**



- 8) The application will then create a bootable USB with the Max update v1.4.24 installed



- 9) Once complete, click **Exit** and call GCC at (800) 247-3808 for instructions on how to enable the Max to boot from the USB drive

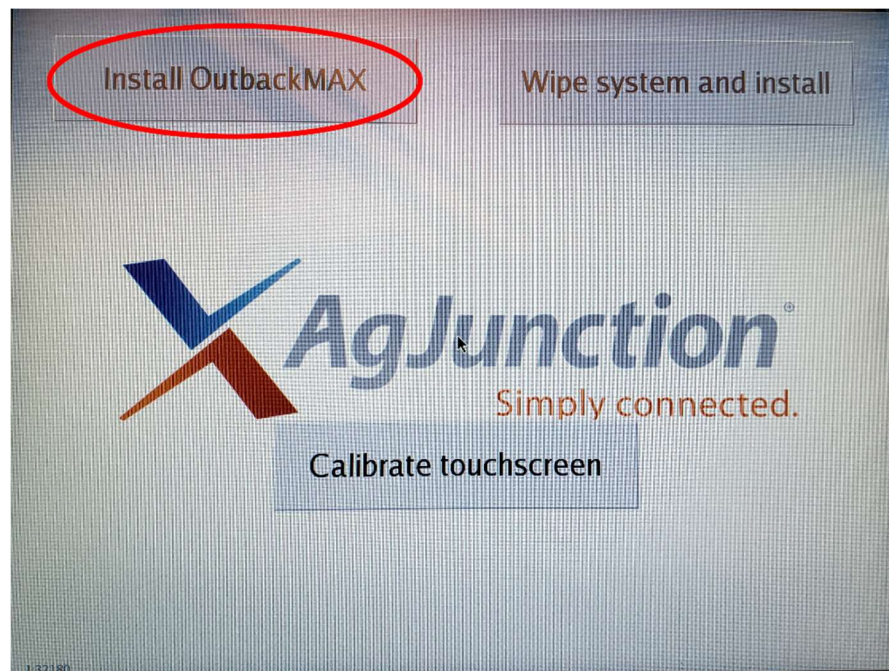


- 10) Once the GCC support personnel has guided you through the steps necessary to enable booting from USB, power down the Max and insert the USB drive into a USB port and power the Max on

- 11) After several minutes, the following screen will appear

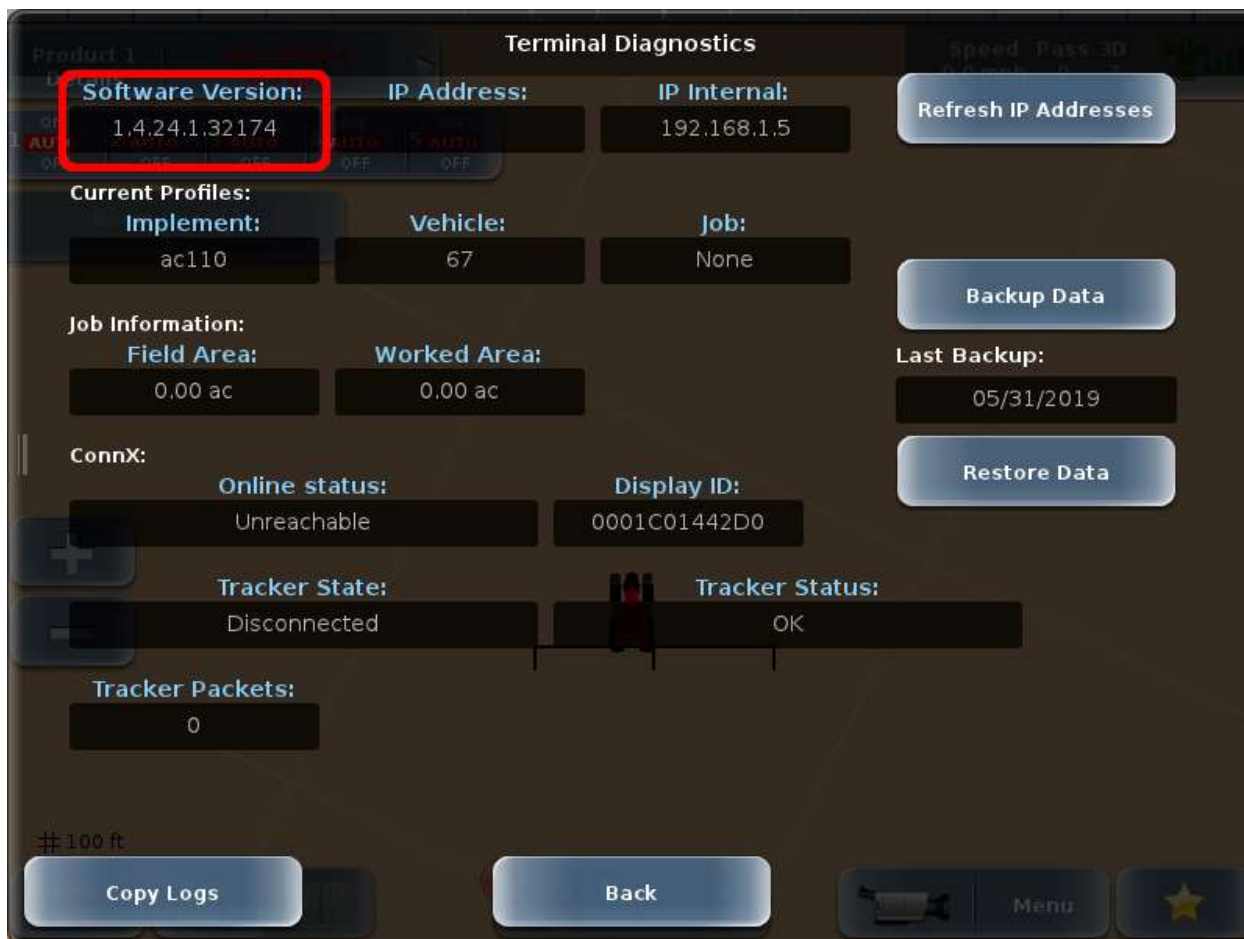
Touch **Install OutbackMAX** to begin the update

Follow on-screen instructions and reboot when prompted



The update process will take approximately 50 minutes

- 12) After the update process is complete, verify the new software version by going to **Menu > Diagnostics > Terminal Diagnostics** and checking the **Software Version** field shows **v1.4.24.1.32174**



Terminal Diagnostics

Software Version: 1.4.24.1.32174

IP Address: **IP Internal:** 192.168.1.5

Refresh IP Addresses

Current Profiles:

Implement: ac110 **Vehicle:** 67 **Job:** None

Backup Data

Job Information:

Field Area: 0.00 ac **Worked Area:** 0.00 ac

Last Backup: 05/31/2019

Restore Data

ConnX:

Online status: Unreachable **Display ID:** 0001C01442D0

Tracker State: Disconnected **Tracker Status:** OK

Tracker Packets: 0

Copy Logs **Back** **Menu**